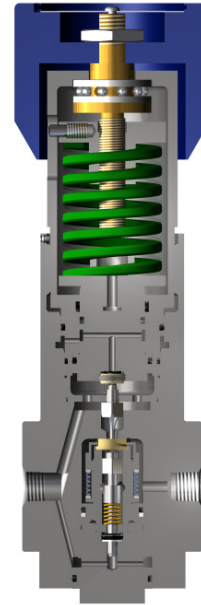


# LGC 690 SERIES

**Low Pressure 'LOGIC' Hydraulic Reducing Regulator**  
**Max inlet: 414bar/8000psi**  
**Piston Sensed for outlet control to 10bar/150psi**



The LGC690 provides accurate low pressure control on Logic Control Systems used on Wellhead Control Panels where low deadband and repeatable pressure control is critical.

## FEATURES:

- Large precision machined piston sensed element
- Setpoint deadband +/-0.25bar per 100bar inlet pressure
- Easy to service Main Valve cartridge assembly
- Balanced Main Valve
- 30 Micron filter element
- Self venting with captured port

## APPLICATIONS:

Wellhead logic control systems

## STANDARD MATERIALS OF CONSTRUCTION

Regulator part	Material
Body and Bonnet	316SS
Main valve pin	316SS
Seat	PEEK
Valve spring	316 S42
Sensor and Holder	316SS
Handwheel	Nylon
Spring rests	316SS
'O' ring seals	NBR, Viton or EPDM
Adjusting screw	Ali Bronze
Loading Spring	Spring Steel
30 Micron Filter	316SS

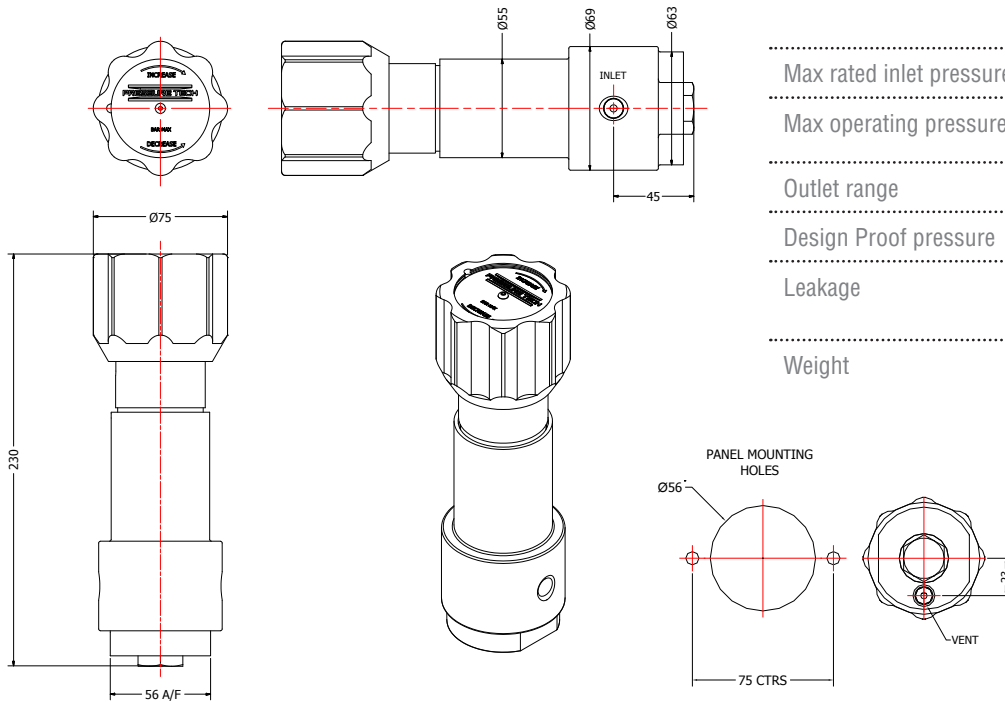
Pressure Tech reserve the right to amend dimensions and product detail as part of our commitment to achieve product realisation. Product selection is based on compatibility information and any prior user experience. Unless otherwise and specifically agreed, Pressure Tech cannot guarantee the suitability of product on individual applications, and this remains the users responsibility.

// pg 1 of 2

# LGC 690 SERIES

**Low Pressure 'LOGIC' Hydraulic Reducing Regulator**  
**Max inlet: 414bar/8000psi**  
**Piston Sensed for outlet control to 10bar/150psi**

## DIMENSIONS (FOR INDICATION PURPOSES ONLY):



## SPECIFICATION :

Max rated inlet pressure	690bar (10,000psi)
Max operating pressure	414bar (8000psi)
Outlet range	10bar (150psi)
Design Proof pressure	150% max WP
Leakage	Zero drops of water at max inlet pressure
Weight	3.5 kg

## ORDERING INFORMATION:

**LGC690 - 03 - S - 10S - N - 02N - N - SV**

Basic Model  
LGC690

Cv Value  
03 - 0.3

Body material  
S - 316SS

Outlet ranges (Examples\*)  
10S - 0 - 10bar

Optional SS Panel Mounting Ring: PT-C-061-005

Venting Options  
SV - Self Venting  
NV - Non Venting

Porting configuration  
Refer office

Inlet/outlet connections  
02N - 1/4" NPT

O Ring  
N - NBR  
V - Viton  
E - EPDM  
H - HNBR

Pressure Tech reserve the right to amend dimensions and product detail as part of our commitment to achieve product realisation. Product selection is based on compatibility information and any prior user experience. Unless otherwise and specifically agreed, Pressure Tech cannot guarantee the suitability of product on individual applications, and this remains the users responsibility.

// pg 2 of 2